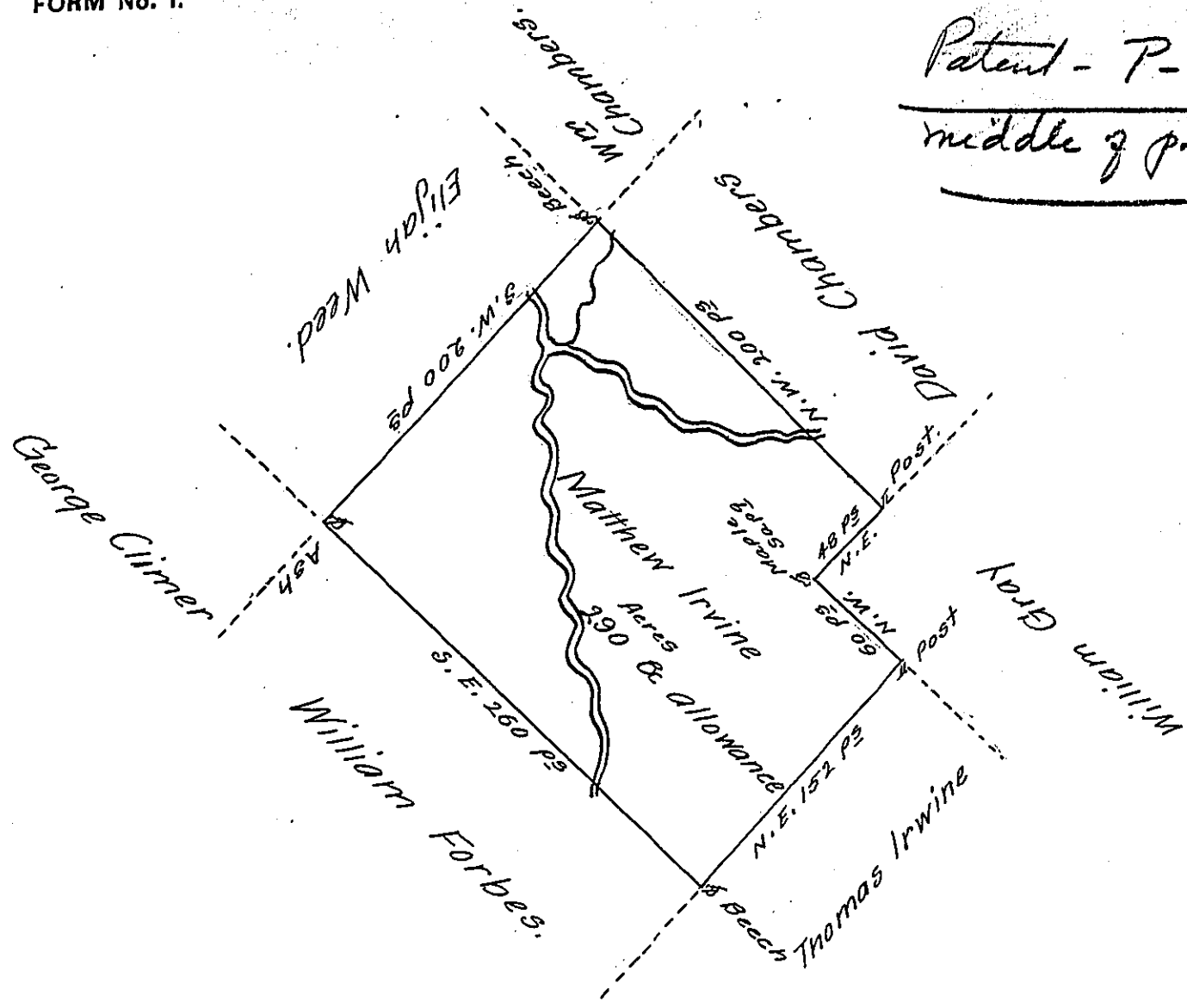


Patent - P-1-394 94

middle of page X



A Draught of a Tract of Land Called — situate on some small Branches of Tunkhannock Creek adjoining Land Survey'd for Thomas Irwine in the County of Northumberland Containing Two hundred and Ninety Acres besides the Usual allowance of 6 P<sup>ct</sup> Cent for Roads &c<sup>ce</sup> surveyed for Mathew Irwine the 8<sup>th</sup> day of May 1775 in pursuance of a Warrant dated the 20<sup>th</sup> day of February 1775.

Chas<sup>s</sup> Stewart Dep<sup>y</sup> Sur<sup>r</sup>.

To John Lukens Esq<sup>r</sup>  
Surv<sup>r</sup> Gen<sup>l</sup>

IN TESTIMONY that the above is a copy of the original remaining on file in the Department of Internal Affairs of Pennsylvania, made conformably to an Act of Assembly approved the 16th day of February, 1833, I have hereunto set my Hand and caused the Seal of said Department to be affixed at Harrisburg, this fourteenth day of November 1905.

*Lucas B. Brown*  
Secretary of Internal Affairs.